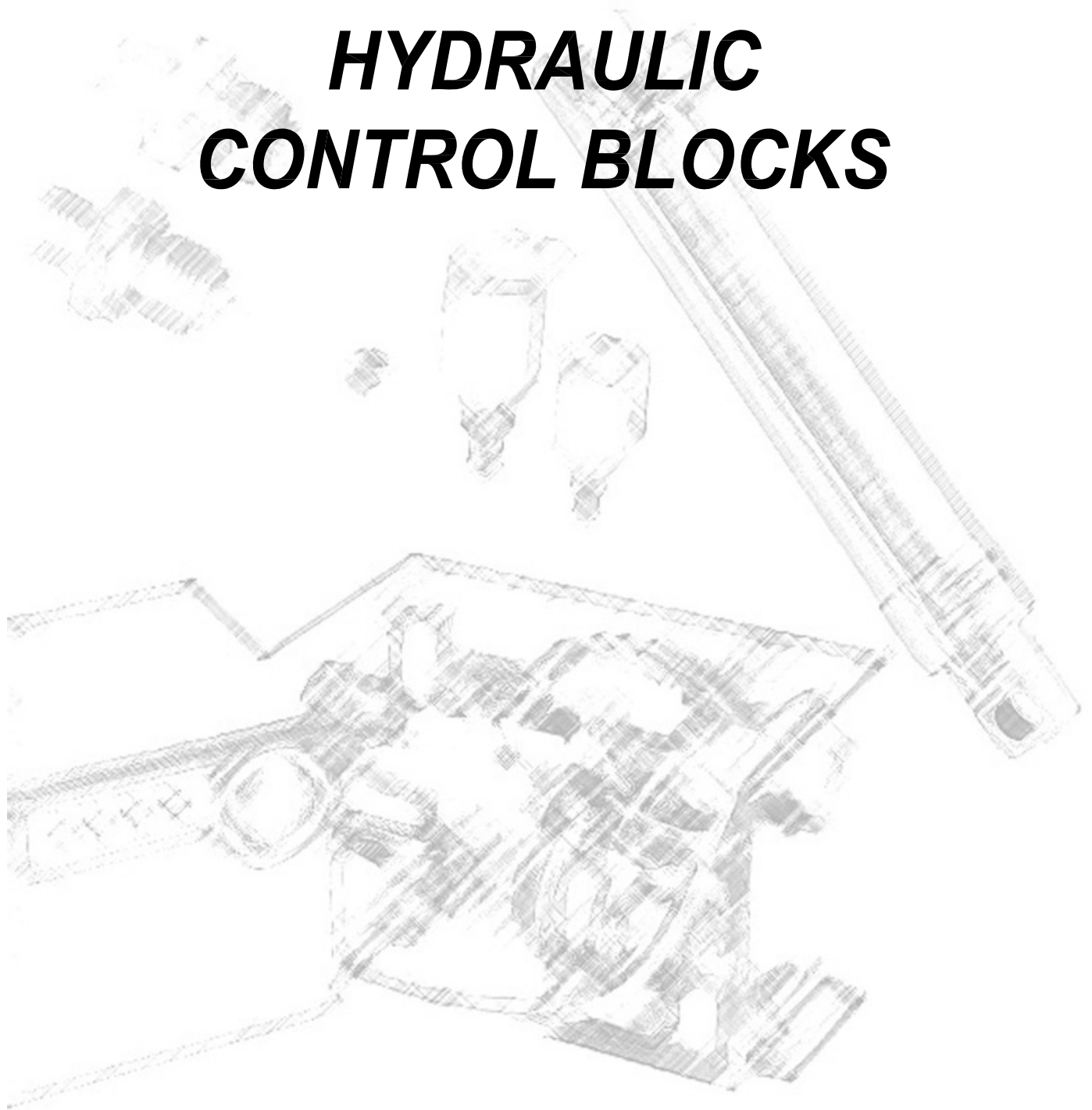
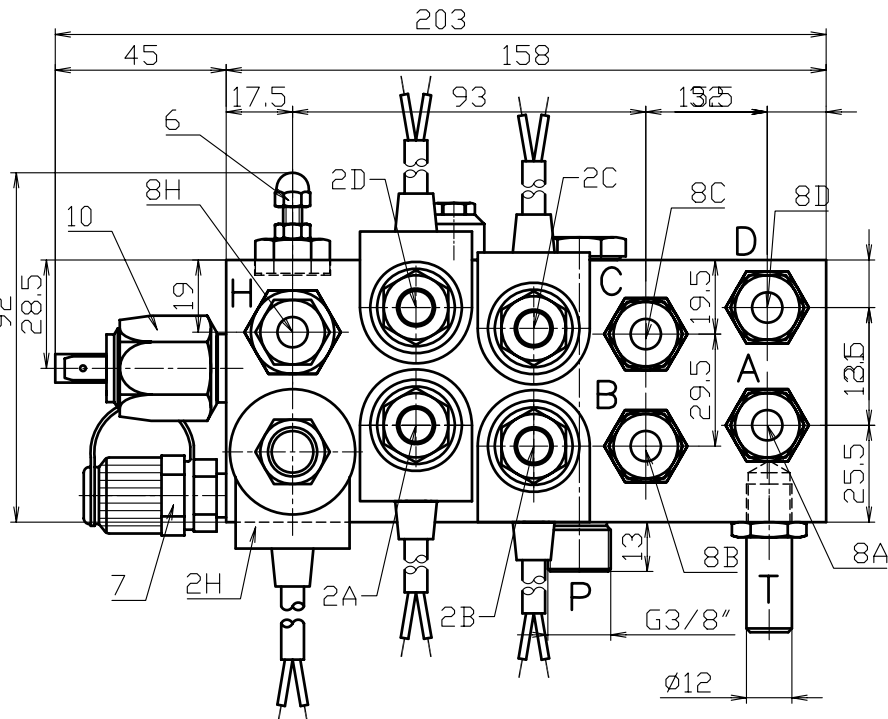
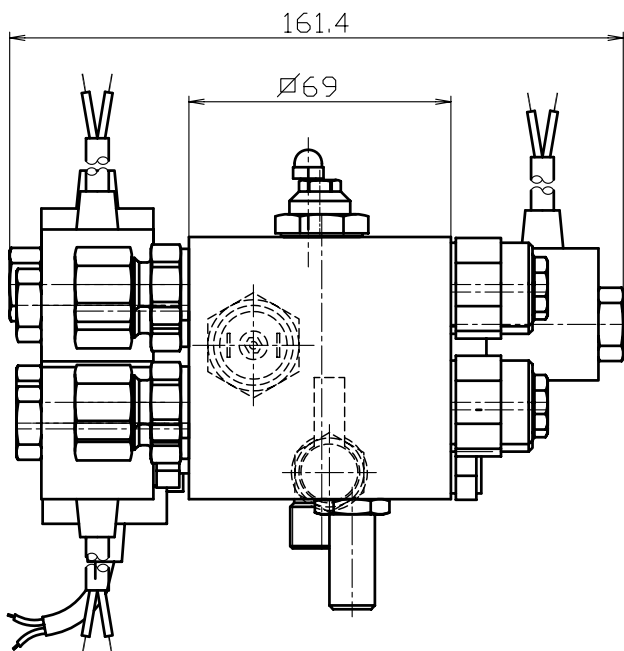
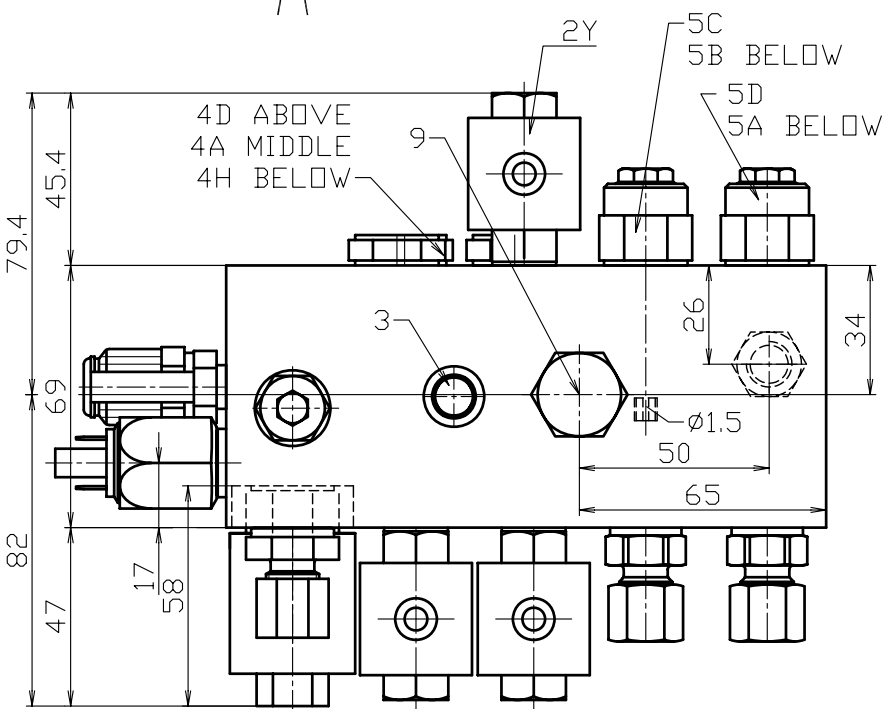
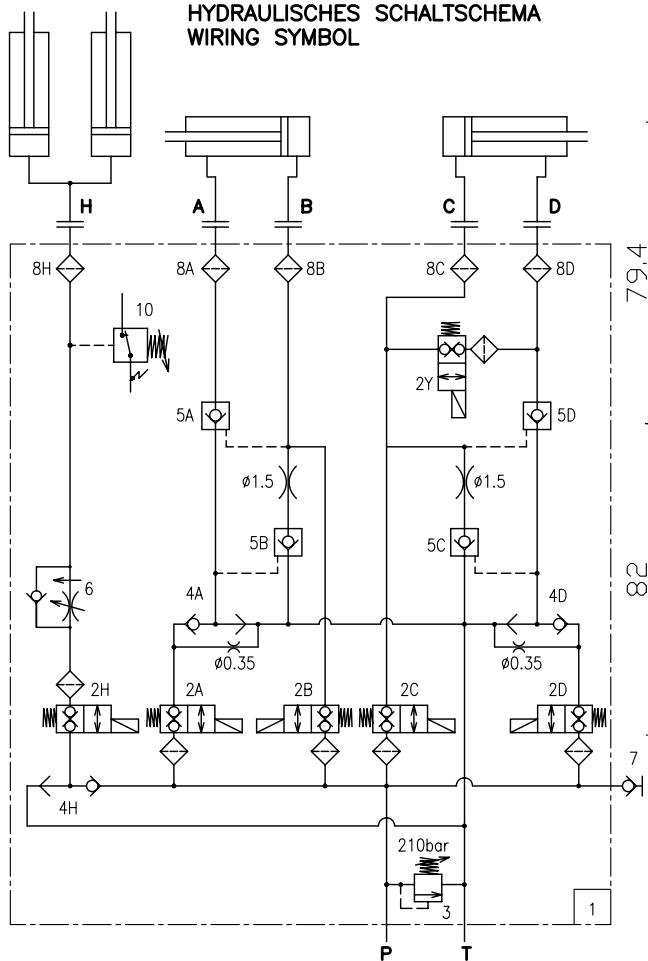


HYDRAULISCHE STEUERBLÖCKE *HYDRAULIC* *CONTROL BLOCKS*





HYDRAULISCHES SCHALTSCHEMA
WIRING SYMBOL

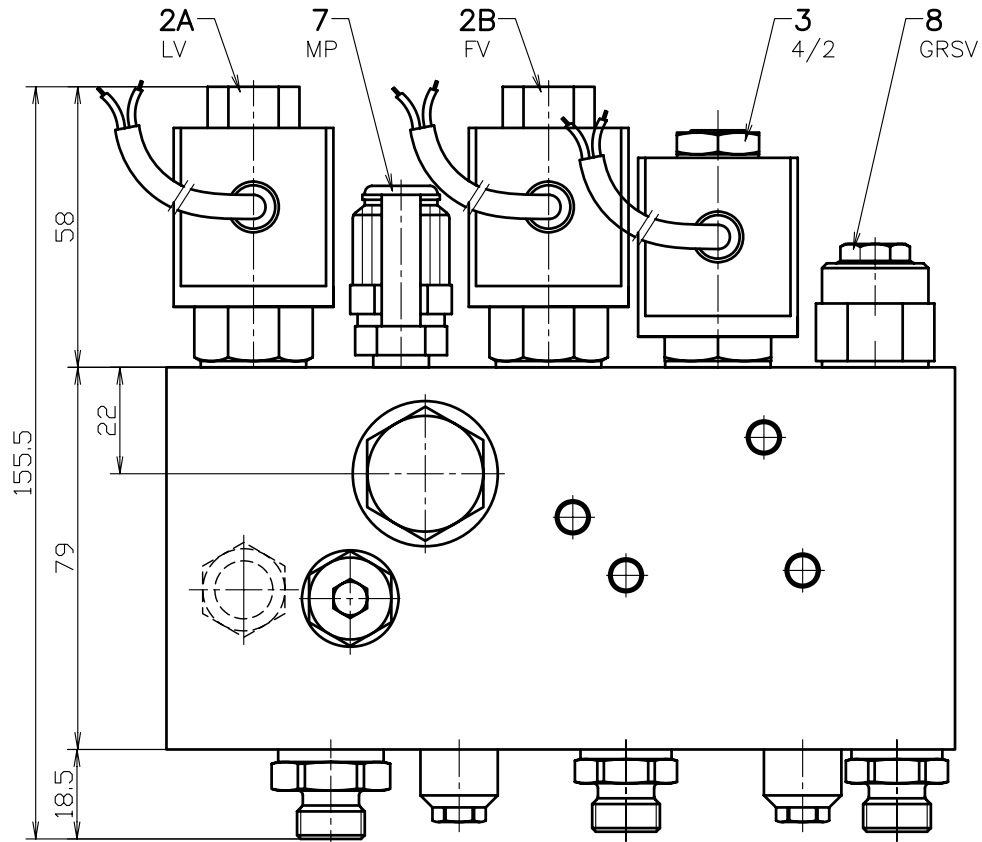
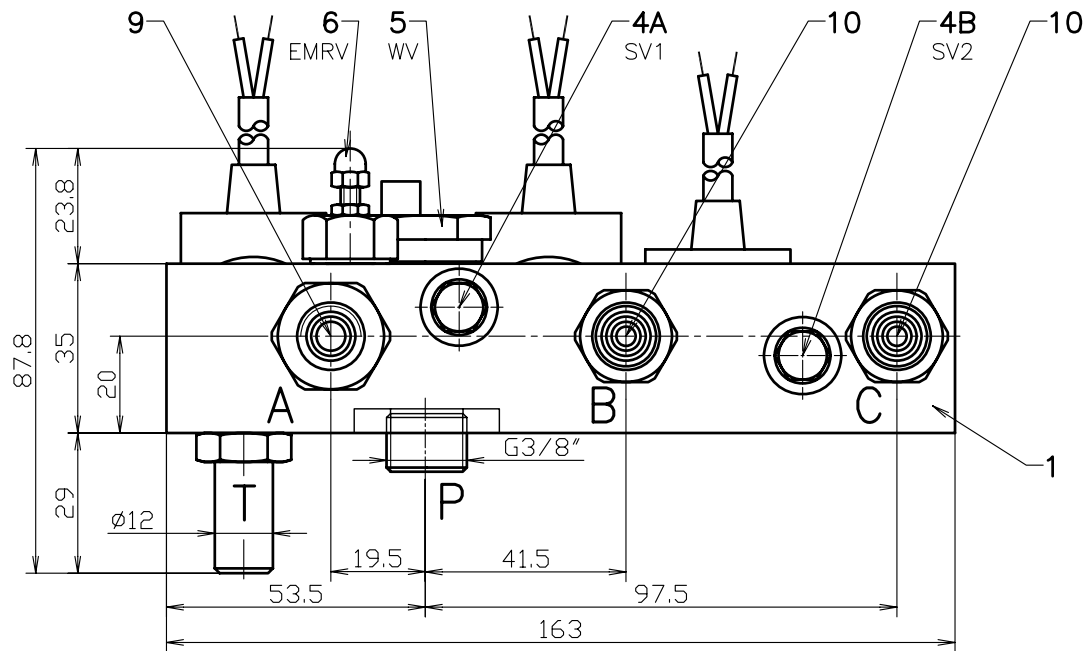


- 1 VENTILBLOCK
VALVE BLOCK
- 2A,B,C,D,Y 2/2-WEGEVENTIL MHW-C-030F
2/2-WAY VALVE
- 2H 2/2-WEGEVENTIL MHW-C-30F
2/2-WAY VALVE
- 3 SICHERHEITSENTIL MHW-SV7x1
RELIEF VALVE
- 4A,D WECHSELVENTIL MHW-WV-1C/0.35
SHUTTLE VALVE
- 4H WECHSELVENTIL MHW-WV-1C
SHUTTLE VALVE
- 5A,B,C,D GESTEUERTES RÜCKSCHLAGVENTIL
MHW-GRSV-BG-1
PILOT CHECK VALVE

- 6 LASTUNABHÄNGIGES EINSTELLBARES
MENGENREGELVENTIL MHW-EMRV-4.1
LOAD INDEPENDENT ADJUSTABLE
FLOW CONTROL VALVE
- 7 MESSANSCHLUSS MS8x1
TEST POINT PLUG
- 8H EINSCHRAUBVERSCHRAUBUNG MIT FILTER
DFV-GE-R3/8"/8
PIPE UNION WITH FILTER
- 8A,B,C,D EINSCHRAUBVERSCHRAUBUNG MIT FILTER
DFV-GE-R1/4"/8
PIPE UNION WITH FILTER
- 9 BEFESTIGUNGSSCHRAUBE MHW-BFS-20
MOUNTING SCREW
- 10 DRUCKSCHALTER 0166 408 03 1 031
PRESSURE SWITCH (1-10bar)

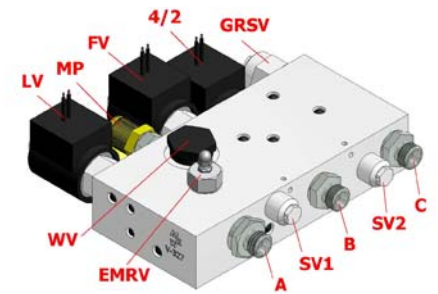
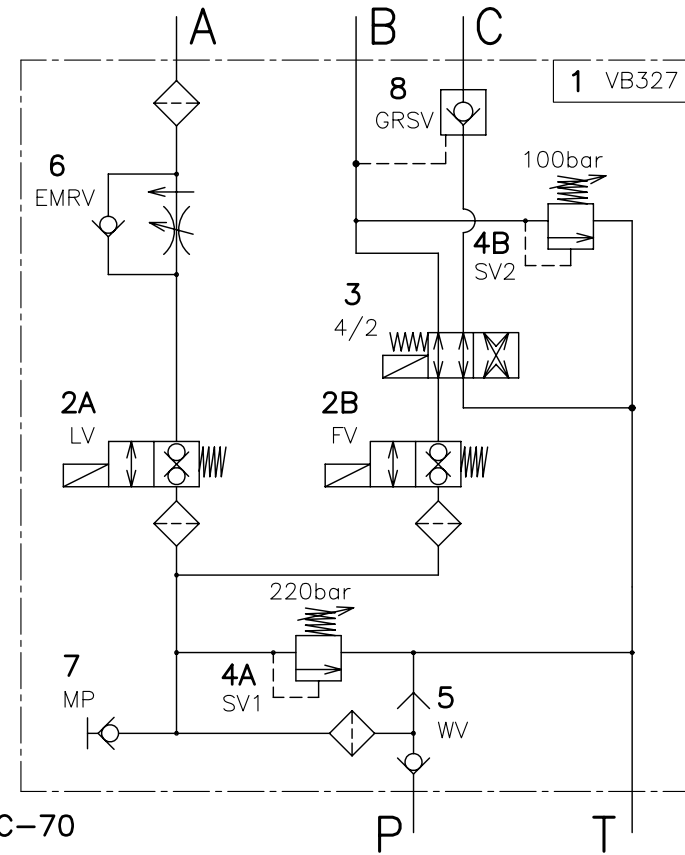
WEIGHT: 3.45kg

VENTILBLOCK 281 VALVE BLOCK

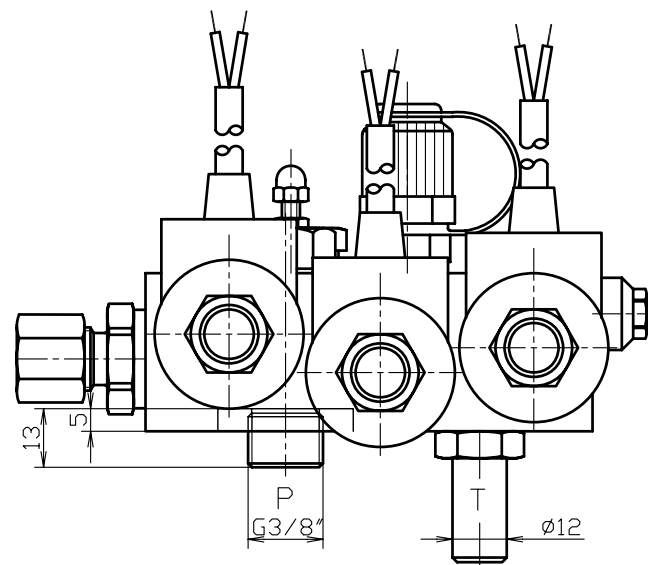
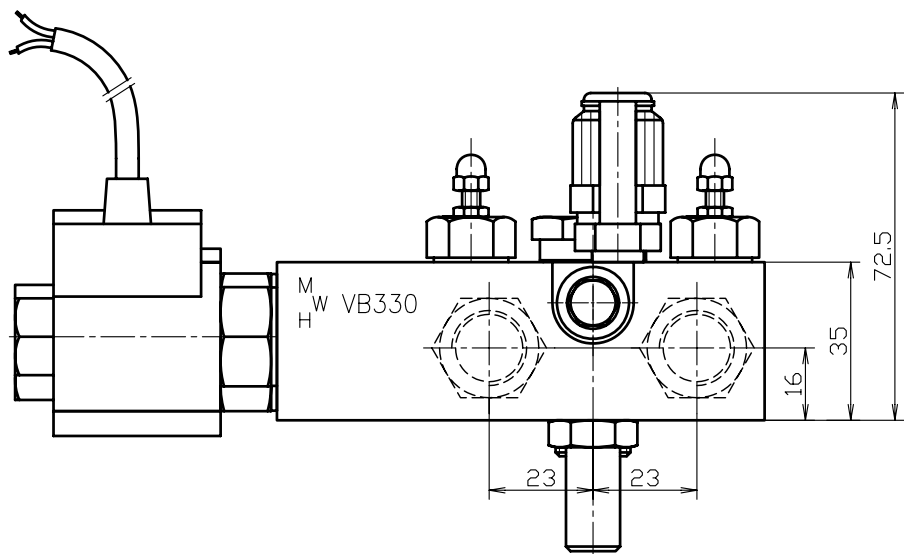


- 1 VENTILBLOCK
VALVE BLOCK
- 2A,B 2/2-WEGEVENTIL MHW-C-30
2/2-WAY-VALVE
- 3 4/2-WEGEVENTIL MHW-C-70
4/2-WAY-VALVE
- 4A,B SICHERHEITSENTIL MHW-SV7x1
RELIEF VALVE
- 5 WECHSELVENTIL MHW-WV-1FO
SHUTTLE VALVE
- 6 MENGENREGELVENTIL MHW-EMRV-2000-10
FLOW CONTROL VALVE
- 7 MESSANSCHLUSS M8x1
TEST POINT PLUG
- 8 GESTEUERTES RÜCKSCHLAGVENTIL MHW-GRSV-BG-1
PILOT CHECK VALVE
- 9 GERADE EINSCHRAUBVERSCHRAUBUNG G3/8"-8L
FITTING
- 10 GERADE EINSCHRAUBVERSCHRAUBUNG G1/4"-8L
FITTING

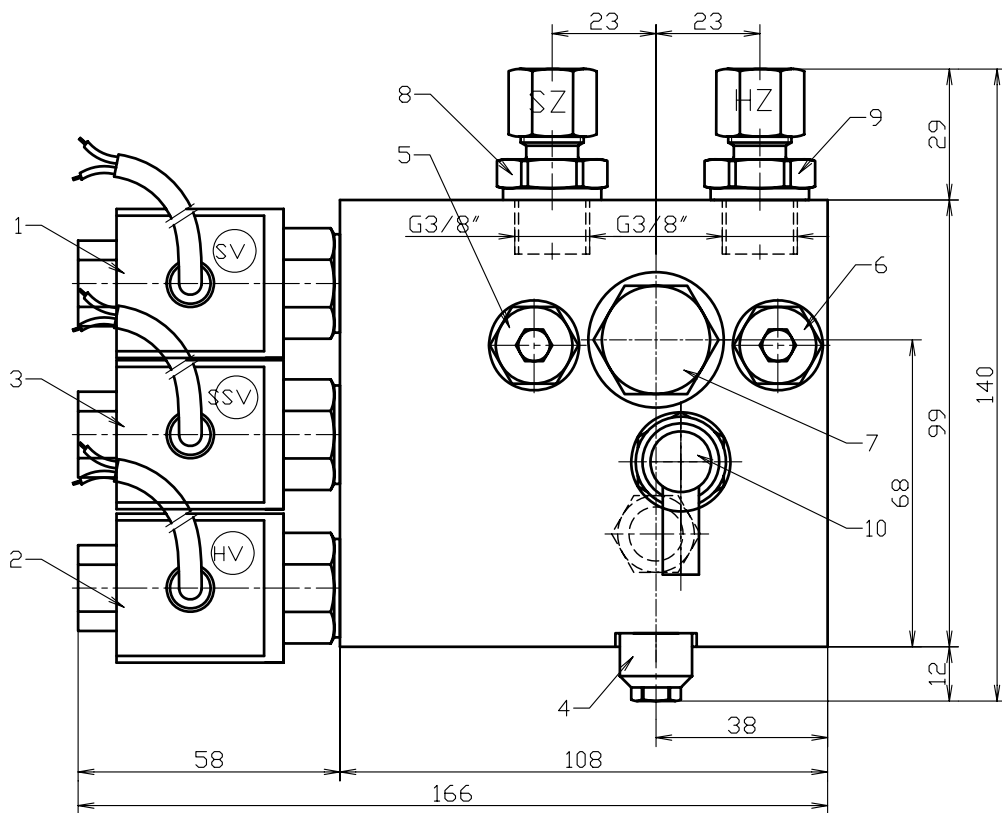
HYDRAULISCHES SCHALTSCHEMA
WIRING SYMBOL



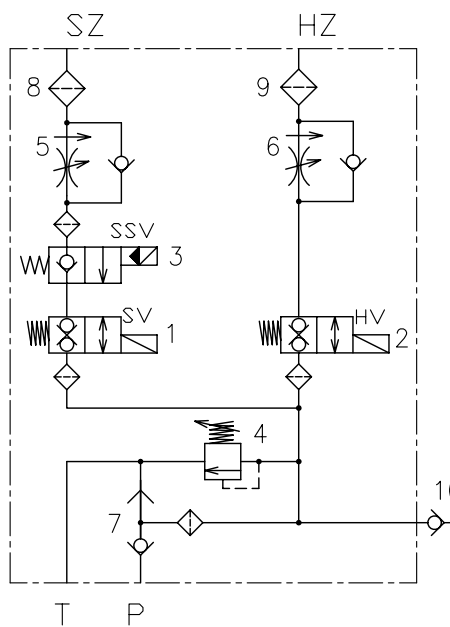
VENTILBLOCK 327
VALVE BLOCK



- HV HUBVENTIL
- SV SCHLISSVENTIL
- SSV SICHERHEITSSCHLISSVENTIL
(für 2-kanalige Absicherung)

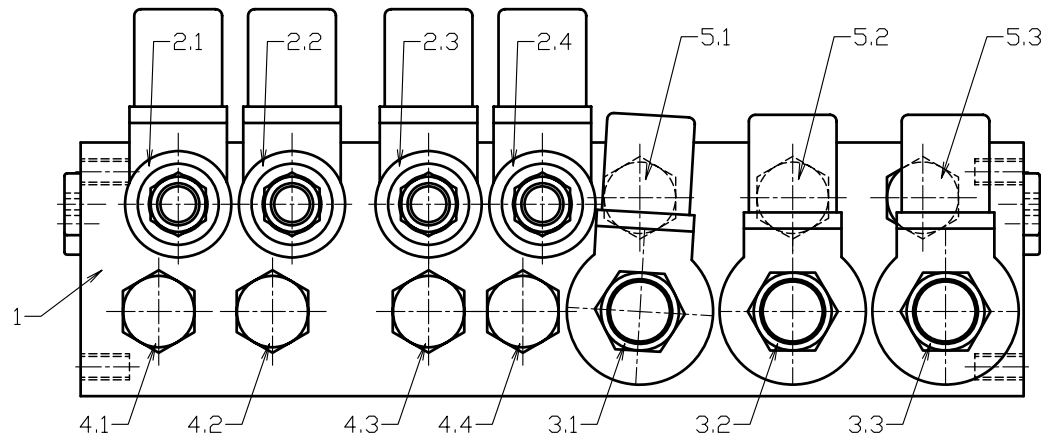
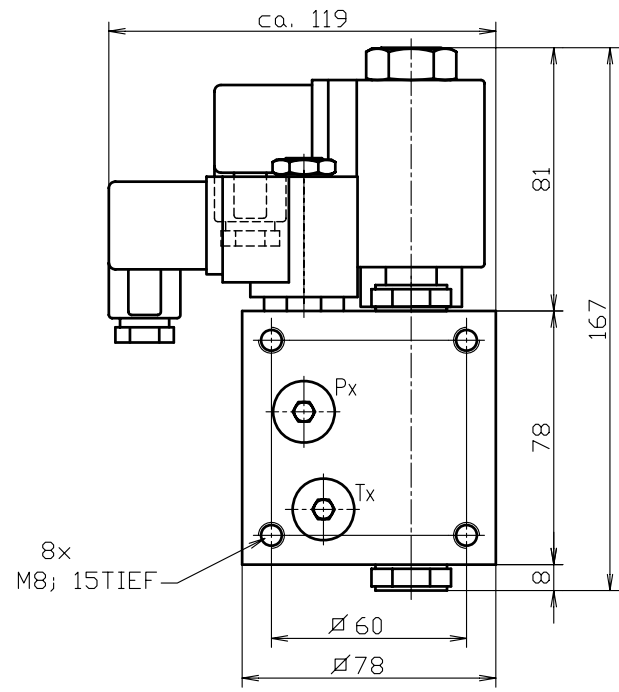
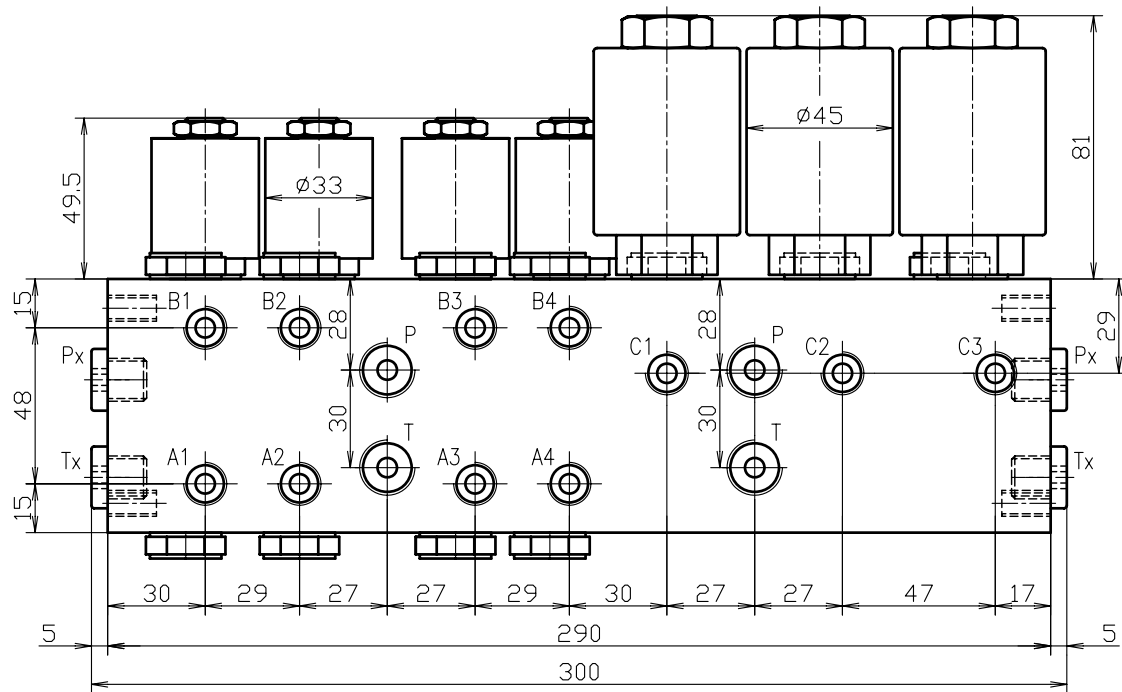


HYDRAULISCHES SCHALTSCHEMA
WIRING SYMBOL

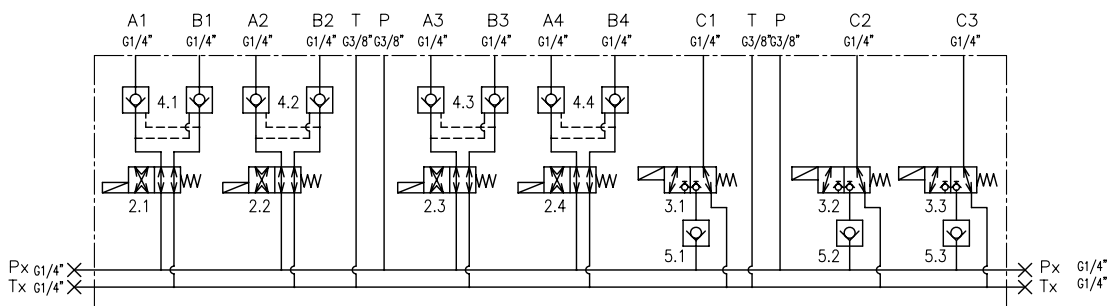


- 1, 2 2/2 WEGEVENTIL MHW-C-30F/12(24)VDC-L-300
2/2 WAY VALVE double blocking
- 3 2/2 WEGEVENTIL MHW-C-10F/12(24)VDC-L-300
2/2 WAY VALVE single blocking
- 4 SICHERHEITSVENTIL MHW-SV7x1 p max.:220bar
RELIEF VALVE
- 5, 6 MENGENREGVENTIL MHW-EMRV-2000-10
FLOW CONTROL VALVE
- 7 WECHSELVENTIL MHW-WV-1FOR
SHUTTLE VALVE
- 8, 9 EINSCHRAUBVERSCHAUBUNG MIT FILTER
DFV-GE-G3/8"/8
PIPE UNION WITH FILTER
- 10 MESSANSCHLUSS MHW-MM8x1
TEST POINT PLUG

VENTILBLOCK 330
VALVE BLOCK



- 1 VENTILBLOCK VB339
ALUMINIUM 78x78x290
- 2.1; 2.2; 2.3; 2.4 4/2-WEGEVENTIL MIT KONTAKTSTECKER
MHW-C-70/12VDC-H bzw 24VDC
- 3.1; 3.2; 3.3 3/2-WEGEVENTIL MIT KONTAKTSTECKER
MHW-C-50CA/12VDC-30W-H bzw 24VDC
- 4.1; 4.2; 4.3; 4.4 HYDRAULISCH ENTSPERRBARE RÜCKSCHLAGVENTILE
JE 2STK MHW-RSV-6BG1 MIT DOPPELSTEUERKOLBEN
- 5.1; 5.2; 5.3 RÜCKSCHLAGVENTIL
MHW-RSV-6BG1



- alle A, B, C, Px und Tx Anschlüsse -> G1/4"
- alle P und T Anschlüsse -> G3/8"
- max. Betriebsdruck: 230bar

VENTILBLOCK 339 VALVE BLOCK